

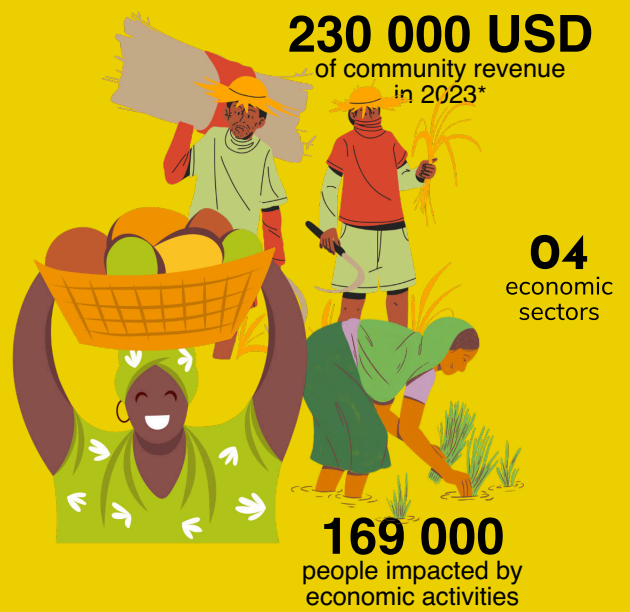
Impact Report 2023

Collaborating with resilient communities to preserve biodiversity

CONSERVATION OF PROTECTED AREAS



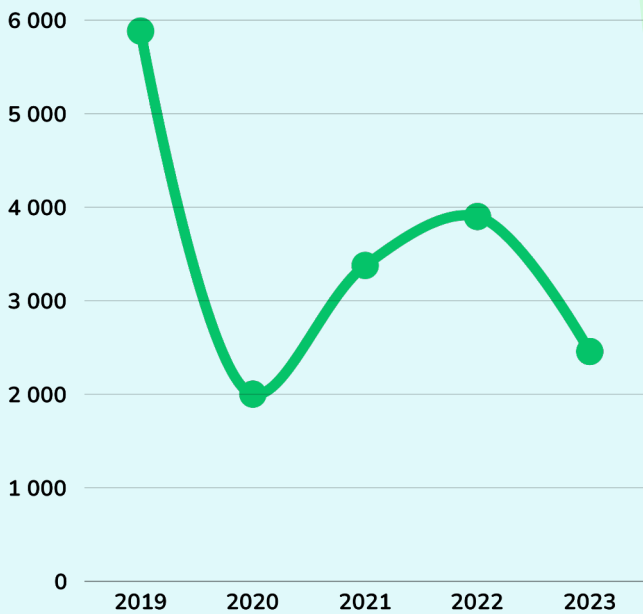
LIVELIHOODS DEVELOPMENT



* Revenue generated by communities in the rice, fisheries, and apiculture sectors

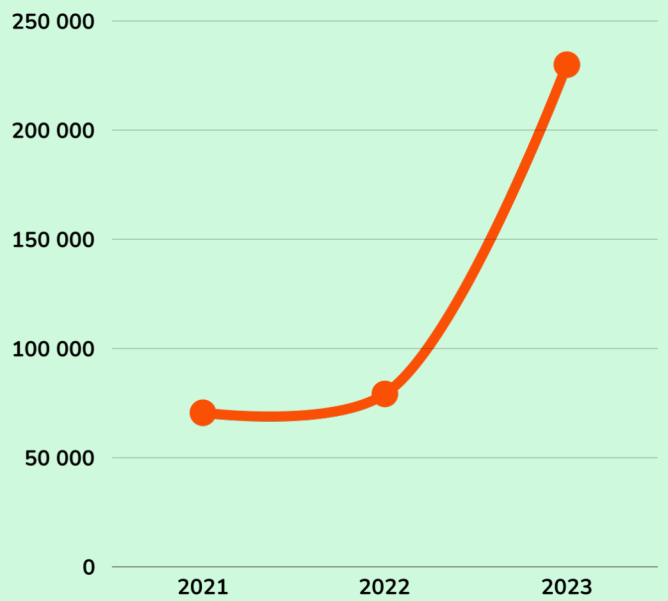
REDUCTION OF FOREST COVER LOSS

since 2019
(in hectares)

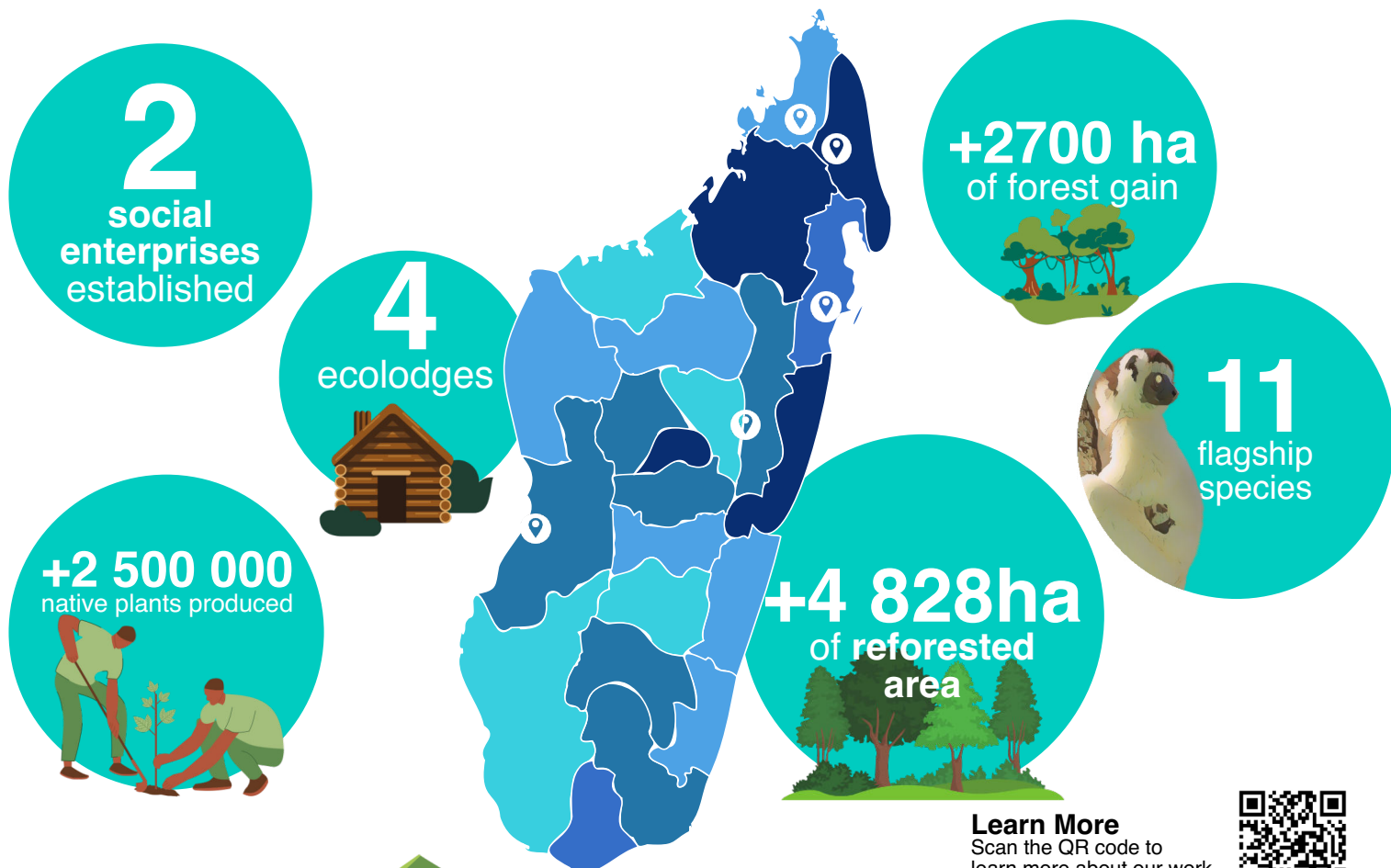


INCREASE OF COMMUNITY REVENUE*

since 2021
(in USD)



A DECADE OF ACTION



Learn More
Scan the QR code to learn more about our work

